



어플리케이션 노트

2023년 11월 27일

강화 고무 컨베이어 벨트의 두께 검사



Application: Measuring the depth of textile and steel reinforcements in rubber conveyor belts, and measuring the remaining rubber thickness of in-service belts during maintenance.

Background: A wide variety of rubber conveyor belts for heavy-duty industrial and mining service such as ore and mineral transportation incorporate internal layers of woven fabric or steel cords for strength reinforcement. Conveyor belt manufacturers need to check the depth of the reinforcement layer across the belt in order to insure that the product meets specification. After installation, belt users need to periodically check the thickness of the remaining rubber as the belt wears down in order to

estimate the remaining service life before replacement. Because large belts can be very expensive, accurate information on remaining rubber thickness is valuable to users. Our instruments and transducers have been successfully employed in this test for many years.

Sound energy reflects off the first layer of reinforcement, and in the case of textile or fabric reinforced belts very little sound energy will penetrate deeper. Measurement of total belt thickness is normally possible only in the case of some steel-reinforced belts where there is sufficiently wide separation between the steel cords to permit sound energy to travel unobstructed the opposite side of the belt. However, the critical dimension for most users is the amount of rubber over the first reinforcement layer, not total thickness. This is usually a straightforward application for ultrasonic thickness gaging.

Equipment: Conveyor belt rubber thicknesses under approximately 12.5 mm or 0.50 in. can usually be measured with standard **thickness gage** models **38DL PLUS** and **45MG with Single Element software**. For greater thicknesses, the High Penetration software option for these gages will be needed should be used. Thickness measurements can also be made with any of the **EPOCH series flaw detectors**. In the case of certain very large belts, with rubber thicknesses approaching 50 mm or 2 in., the Epoch series flaw detectors are the preferred instruments.

The transducer selection will depend on the range of rubber thickness to be measured. For rubber layers between approximately 1 mm (0.040 in.) and 6.25 mm (0.250 in.), a 2.25 MHz **delay line transducer** (M207-RB) will usually be recommended. For measurement of rubber between approximately 2.5 mm (0.100 in.) and 25 mm (1 in.), a 2.25 MHz high penetration contact transducer (M1036) is commonly used. Other transducers are available for thinner and thicker rubber layers.

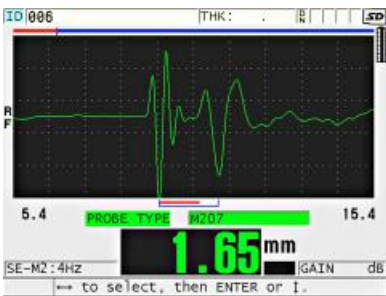
As with any application involving attenuating materials, use of gel couplant or glycerin (Couplant B) is recommended in preference to less viscous fluids. In the case of severely worn in-service belts, any loose rubber or other debris should be removed from the surface before testing.

Procedure: In the most common situation, using the M1036 transducer to measure the outer rubber layers on belts with textile or fabric reinforcement, start with the gage's M1036 default setup and increase maximum gain as necessary to measure the thickness range of interest. If necessary for measurement of thin belts, increase initial gain as well. In any of these setups, gain may usually be increased up to the point where the gage displays a constant false reading when the transducer is uncoupled, which indicates that gain is too high.



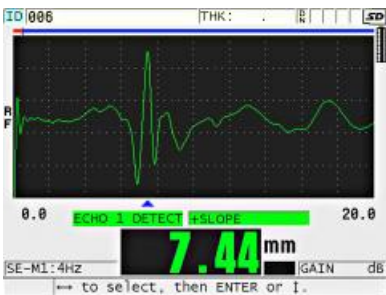
Typical conveyor belt measurement with M1036

To measure thin rubber layers over textile or fabric reinforcement with the M207 delay line transducer, use the M207 Mode 2 default setup and adjust gain and blanking as necessary based on the echoes from a reference standard.



Typical thin rubber layer measurement with M207

Measurement of depth of braided steel cord reinforcements can be more challenging because their irregular contour presents a less optimum reflecting surface. Careful adjustment of instrument gain with the aid of a reference sample is recommended. Also note that echo polarity will be positive rather than negative because the steel represents a high impedance reflector.



Steel cord depth measurement with M1036

Sound velocity in rubber compounds will typically be on the order of 1.650 mm/uS or 0.0650 in/uS. The Olympus Applications Lab is always available to assist with gage setups for specific transducers and belt types.

Related Product



38DL PLUS

다용도로 활용 가능한 38DL PLUS™ 측정기를 이중 요소 탐촉자와 함께 사용하면 부식된 파이프의 두께를 측정할 수 있으며, 단일 요소 탐촉자를 사용하면 박층 또는 다층 소재의 두께를 매우 정확하게 측정할 수 있습니다.

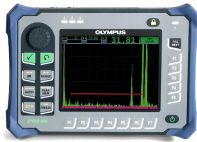
더 알아보기 ▶ [https://www.olympus-ims.com/\\${lang}/38dl-plus/](https://www.olympus-ims.com/${lang}/38dl-plus/)



45MG

45MG 고급 초음파 두께 측정기에는 표준 측정 기능은 물론 다양한 소프트웨어 옵션이 있습니다. 이 독특한 두께 측정 도구는 당사의 이중 요소 및 단일 요소 두께 측정 탐촉자와 호환됩니다.

더 알아보기 ▶ <https://www.olympus-ims.com/ko/45mg/>



EPOCH 650

EPOCH 650은 다양한 응용 분야에 대한 우수한 검사 성능과 유용성을 갖춘 재래식 초음파 결함 검출기입니다. 이 직관적이고 견고한 장비는 인기 있는 EPOCH 600 결함 탐상기 후속작이며 추가 기능을 갖추고 있습니다.

더 알아보기 ▶ [https://www.olympus-ims.com/\\${lang}/epoch650/](https://www.olympus-ims.com/${lang}/epoch650/)



72DL PLUS

72DL PLUS™ 고급 초음파 두께 측정기는 사용이 간편한 휴대용 장치로 빠르고 정밀하게 두께를 측정합니다. 최대 125MHz의 단일 요소 탐촉자와 호환되는 이 혁신적인 두께 측정 도구는 다층 도장, 코팅, 플라스틱과 같은 초박막 소재의 두께의 측정에 매우 적합합니다. 최대 6층의 두께를 동시에 표시할 수 있습니다.

더 알아보기 ▶ <https://www.olympus-ims.com/72dl-plus/>